



Stillpoint Photography: Frank Solle

Miss Bay City: Finds a New Home

Last summer through a generous donation by the Grand Traverse Band of Indians and Gillespie Enterprises, the Marine Museum acquired a piece of local history. The Miss Bay City, a trap net boat, has graced the harbor for the last twenty-seven years on dry land. She started her life at the Bay City shipyard of Harry Defor. The vessel was built in the midst of the Great Depression in 1933 and would go through numerous changes during its working life. The Defor Shipyard began in 1905 and grew to employ of 2000 people during WWII. The shipyard built everything from small 12-foot skiffs to 600-foot Navy ships and luxury yachts for the rich and famous before closing in 1972. The Miss Bay City started out as a small yard vessel or a demonstration boat. She was in back in the shipyard in 1940 and was changed to a tour boat for excursions in the Bay City area. After WWII it was once again back in the shipyard to be modified into a fishing boat.

The earliest picture found of the boat was at the dock in Naubinway looking very much the working trap net boat. She was worn and in need of paint but very useful. Shortly after this time, Hubert Maudre brought the boat to Beaver Island with the intent to fish here. The boat was worked in the harbor for some time when Robert Gillespie got the job to rebuild the Indian fishing dock about twenty-seven years ago. When Hubert passed away and the Miss Bay City was not very sea worthy, she was added to the dock as a patio.

In 2016, a group of adventure-seeking people decided to move it to its current place, but not her final resting place. Richie G. with one of his large front-end loaders managed to help push it partway in to the water. A local workboat, called the "Resolute" with a sound pull managed to get her into open water where she was floating on her own. Over the years the bottom of the boat had a number of holes cut in it. The holes were patched and a gas-powered dewatering pump was used to keep the flooding at bay and while it was towed to the museum grounds. With a big pull from a front-end loader she was dragged ashore.

Plans are currently being made at the Marine Museum on the best way to stabilize and display the boat. The view from the back deck of the Miss Bay City over the harbor at sunset reminds me of one of the reasons we love Beaver Island. ~ Mike Weede

NMU ARCHAEOLOGY

Northern Michigan University started an Archaeology Field School on the Island in 2010. The class is led by Scott J. Demel, Associate Professor of Anthropology. Previous dig sites on the Island include: the Cable Bay Fishing Village, Burke Farm, and the Mormon Print Shop-Isle de Castor Village Site (Middle Woodland). In the stories below, two of Demel's students submitted articles about their findings. The articles are based on 2017 lab work conducted on artifacts from Beaver Island which are housed in the archaeology lab on the NMU campus. Demel will be a featured speaker on July 18th during Museum Week. NMU field school will return in 2018.

Tacks in the Sand

By: Ryan Peterson



While conducting archaeological investigations behind the Mormon Print Shop, NMU students uncovered a small collection of decorated metal tacks. The tacks were found approximately 60 to 70 cm below the surface. When first uncovered, these were thought to be a collection of brass buttons, as they lacked the long metal pin of the back indicating they were tacks. As the excavations progressed, more were found with the long pin attached showing that they were indeed decorated upholstery tacks (See Figure 1). These decorative tacks would have been French trade goods, which date to the proto-historic period on the island. Tacks like these were commonly used to decorate weapons of Native Americans, such as tomahawk handles and gun stocks. Currently, the NMU Chemistry Department is testing the exact composition of the tacks. A chemical analysis of a stem pin showed that it contained 78% copper, 14% Zinc, 6% lead, and small amounts of other traces. This matches up to the levels of brass Europeans produced at this time. We are currently waiting for the results from the chemical analysis of the base of the tack. When investigators handled the tacks, a slight shine appeared, which lead them to believe that the face of the tacks may contain a thin layer of silver. Only the chemical analysis can tell us for sure.

Archaeology continued on page 6

DIRECTOR'S CORNER



Hello society members and visitors. My name is Lori Taylor-Blitz and it is with great enthusiasm and happiness to introduce myself as the new Beaver Island Historical Society Director. I come to the Island from the Upper Peninsula, where for now; I call home in the winters. My husband, Bill and I have lived in Escanaba for seventeen years. We have a blended family of four adult children, a six year old grandson & a granddaughter on the way. She is due in June. We also have two cute Mal-Shi's named Sammy and Angel. In June, my husband and pups will join me.

I have a master's degree in Historic Preservation from Eastern Michigan University and a bachelor's degree in history from Northern Michigan University.

This winter, from my home office, I got busy planning Museum Week, applying for grants, writing to Docents, reading the forum and anything Beaver Island.

I researched a 2017 summer exhibit for the Bonifas Art Center in Escanaba. The traveling exhibit is called Wooden Boats Afloat: The Stories of Traditional Boat Building in Michigan's Upper Peninsula. Don't let the title fool you... I slipped a panel in on a Beaver Island boat!

In 2015, I interned with Eastern Michigan University Foundation. I researched funding sources aligning with EMU colleges under the university umbrella and helped fundraise for an Undergraduate Research Symposium. In the summers of 2013-2014, I worked at Fayette Historic State Park as a history and cultural resource intern. I met several times daily with park visitors about mining, smelting pig iron, and about the company town and architecture of Fayette. I have also worked on nominations for the National Register of Historical Places, Historical Architectural Building Surveys, MDOT Cultural Corridor nomination, and numerous papers on Michigan or Upper Peninsula history and architecture.

I am looking forward to the adventure before me, making new friends, trying new things and learning about the island culture and history. Please stop in the museum and say hello, let me know from time-to-time how I am doing, and what you would like to see when you visit the museums, or attend our events.

VOLUNTEER CORNER



It is with great pleasure I share with you the news that Sue Oole has accepted my invitation to be our new Docent Coordinator. For those of you who haven't met Sue, her family built Beaver Lodge back in the early 50's, and it was the first home she remembers. She visited periodically after leaving the island and, in 1998, was asked to explore the idea of holding a fine arts camp for kids now called MAD Camp. Sue retired from Western Michigan University and claims the island as her permanent home. Please feel free to stop in the Print Shop Museum to meet Sue. She is also the one to see with your island genealogy questions.

I would like to thank our volunteers, and other worker bees, who have supported the BIHS's museums and events. I hope it was an enjoyable experience and you will continue your support this year and encourage others to join us. A new season of historical exploration will begin on Friday, June 16th at 10:00 am at the St. James Township Hall. Saturday, June 17th from 1-3 PM in both museums will be our Open House. Sunday, June 18th Museum hours resume for the Summer season. We look forward to seeing you.

SUMMER INTERN



Our summer intern is Courtney Alexis deRuiter, she is the daughter of Chris deRuiter & Connie Gatliff-deRuiter. She has enjoyed spending summers on Beaver Island and has worked various island jobs. Courtney graduated in 2015 from the University Liggett School, Grosse Pointe Woods; and is currently a junior at Ferris State University, where she studying to be a Dental Hygienist. We are looking forward to working with her this summer. Be sure to stop in and say Welcome Aboard.

BOARD OF DIRECTORS

Doug Hartle - President
Mike Weede - Vice President
Linda Wearn - Secretary
Sandy Birdsall - Treasurer
Mark Engelsman
Lynne Flangan
John Fiegen
Alvin LaFreniere
Sheri Timsak
Bobbi Welke
Johnny Runberg

BOARD OF DIRECTORS STAFF

Museum Director
Lori Taylor-Blitz

Administrative Assistant
Krys Lyle

Volunteer Coordinator
Sue Oole

Summer Intern
Courtney deRuiter

MUSEUM HOURS

JUNE 18TH- OCTOBER 7TH
Summer Hours
Monday - Saturday 11:00-5:00
Sunday 1:00 - 3:00

Print Shop Museum
26275 Main Street
231.448.2254
bihistory@tds.net
www.beaverislandhistory.org
Marine Museum
38105 Michigan Aveume

Join us for the 37th ANNUAL MUSEUM WEEK July 16-22, 2017

Sunday

11 AM @ Print Shop: Scavenger Hunt. Players will be challenged to find daily clues by attending Museum Week events museums, and visiting sponsors. Stop in and enjoy a glass of cold lemonade and homemade cookies and pick up a game card.

Monday

1-4 PM @ Heritage Park: Traditional Kite Building. Learn to make a traditional kite with our new director and see the outdoor exhibit on the history of the Beaver Island Airports. Also, the Michigan Blacksmiths Artist Association will be in the park Monday–Wednesday crafting trinkets out of Beaver Island nails.

4:00 PM @ Print Shop - Birding Trail Drive w/ Donna Hardenburg.

7-9 PM outdoors @ Print Shop: MUSIC ON THE PORCH To sign up contact Sheri Timsak by 7/15/2017 @ 448-2510.

TUESDAY

10 AM - 3 PM @ Whiskey Point: CMU Station Open House.

@ Holy Cross Church

1:30-2:15 Cindy Winslow, Grand Traverse Band of Ottawa and Chippewa Indians will give a presentation about Beaver Island history and the Eyaawing Museum and Cultural Center.

2:30- 3:15 Renee Dillard, The Little Traverse Bay Bands of Odawa Indians. Renee is a traditional Ash Basket Weaver and will give a presentation on the process of selecting a tree and crafting baskets.

4-5 PM Wesley Andrews, THPO & NAGPRA Officer for the Little Traverse Bay Bands of Odawa Indians will talk about the Native artifacts on display in the Print Shop Museum.

7-8 PM Terri Bussey presents *Stories Written in the Stones*.

8-9 PM Professor Scott Demel - Learn about the works of NMU's Archaeology field school and the found discoveries of Beaver Island's history.

WEDNESDAY

12- 4 @ Gregg Fellowship Hall - Annual Art Show. Wednesday - Friday.

1-4 PM Heritage Park - Historic Mackinac on Tour. Costumed historical interpreters bring the Fur Trade and Straits of Mackinac history to life.

1-3 PM Protar Tour - Wednesday and Thursday

7 PM @ BI Comm. School - Dr. Russell Magnaghi presents an evening talk about Rum Running on the Great Lakes and his latest book, Prohibition in the Upper Peninsula: Booze & Bootleggers on the Border. Be the first to pick up a signed copy!

THURSDAY

9:00 AM-NOON @ CMU Biological Station: Children's Field Trip. The cost is \$10.00 and does not include lunch.

1:00-4:00 @ Heritage Park - Sheepshank Sam is an old-time Michigan shanty boy lumberjack and storyteller.

7-9 PM @ BI Comm. School - Brandon Schroeder - Great Lakes Fisheries Heritage Trail: People, Fish and Fishing.

FRIDAY

9:00 AM-NOON CMU Biological Station - Children's Field Trip. Cost \$10.00 and does not include lunch.

1-4 PM @ Heritage Park - Meet and Greet with Detroit Paranormal Expedition. Stop by and share your stories.

7-9 PM @ School - Detroit Paranormal Expeditions - THE BEAVER ISLAND EXPERIENCE. The team will discuss a May 13th visit to the island. Follow them at www.detroitparanormalexpeditions.com

SATURDAY

1-3 PM @ Heritage Park - Storytelling

Doris Larson will tell favorite childhood stories, including some Native American legends.

Scavenger Hunt Winners Announced! Stick around after storytelling and present your Scavenger Hunt game cards. While there, tell the Museum director how much fun you had exploring Beaver Island and attending our events!

BINGO @ Holy Cross Hall - Doors Open at 6:00, Rules at 6:40, and Games begin at 7:00 PM SHARP Admission is \$20.

Concessions Available.



Museum Week is made possible in part by a grant from the Michigan Humanities Council, an affiliate of the National Endowment for the Humanities and the generous Sponsorships and Volunteers of the Beaver Island Community. Thank You!

OUR MISSION

The purpose of the Society shall be to foster the collection and preservation of materials concerning the history of Beaver Island; the dissemination of information concerning historic events and places relating to Beaver Island; the procurement and preservation of historical relics and places; the owning, leasing, furnishing and managing of historic buildings; and the purchase or construction of buildings and property in the furtherance of these purposes for which this Society is formed.

HOW YOUR DONATIONS ARE BEING USED

Join and Support Us

The Beaver Island Historical Society (BIHS) is an integral part of the Beaver Archipelago community dedicated to preserving the history of the Islands and sharing it with future generations. You can help us fulfill our mission by becoming a member, giving donations, or sharing of your time and talents as a volunteer.

Membership

The BIHS is a 501(c) 3 organization, dependent upon donations, grants, membership dues, tax millage, and earned income. Money received is used to provide annual operating support, the Capital Campaign, events, and care for museum collections. Your membership also supports a Spring and Fall newsletter distributed to all members and shared with museum visitors. To become a member, simply complete the enclosed slip and return. You may also join via our website: www.beaverislandhistory.org Membership runs January 1 to December 31.

Donations

Unrestricted donations from our many supporters account for an important part of our current operating budget; utilities, insurance, office services, general grounds, building maintenance and the minimum core staff.

Restricted donations from our supporters, unless otherwise noted, are applied to our Capital Campaign and moves us one step closer to building an addition to house an *Island Life* collection.

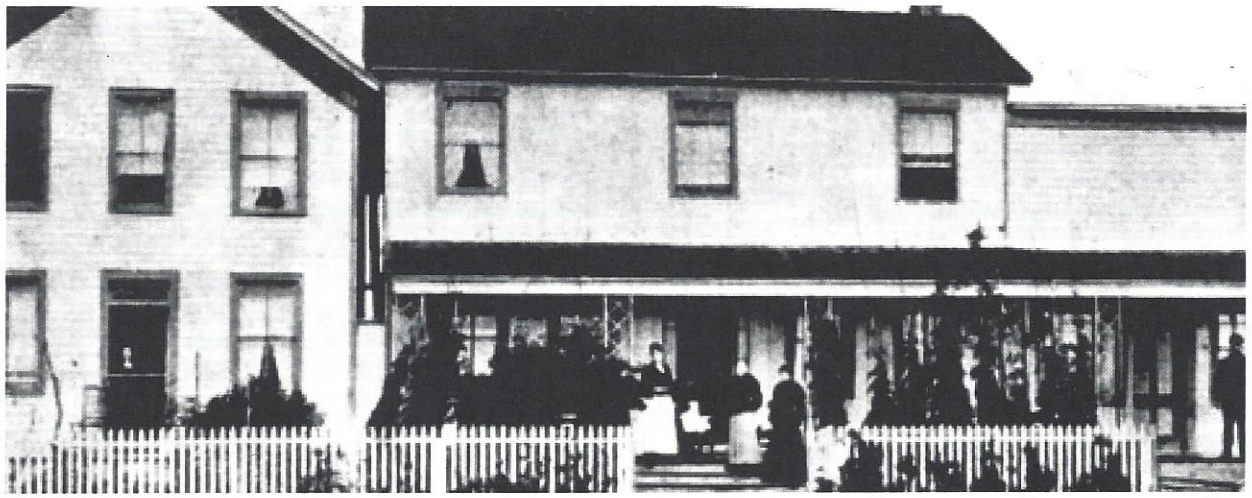
Another way to give a restricted donation is through the Charlevoix County Community Foundation to the Beaver Island Historical Society Fund. This endowment fund is to accumulate, and manage a fund for the Society, with a long-range goal of establishing a fund sufficient to provide assistance for operational expenses.

Charitable Bequest to the Beaver Island Historical Society

Through a bequest, you can make a gift to the Beaver Island Historical Society through your will. A provision in your will that names the Society as a beneficiary of all or a portion of your estate will assure that you will leave a meaningful legacy in support of our mission. If you already have a will, you may consider adding a bequest through a codicil, which is a change to an existing will. Our address is Beaver Island Historical Society of MI, P.O. Box 263, Beaver Island, MI 49782.

Tax Deductible

All donations are tax deductible to the full extent of the law. Receipts are sent out acknowledging all donations of cash, object or in-kind services.



REMEMBERING 60 YEARS AGO!

This year marks the 60th Anniversary of the founding of the Beaver Island Historical Society (BIHS). Planning is underway for an exciting fundraising celebration to commemorate all the hard work and dedication the Volunteers, Members, Donors, Trustees of the Society, and Community collaboration over the last six decades. Come celebrate with us on July 3, 2017, at Holy Cross Hall. The doors open at 5:30 PM. The festivities kick off with a dinner party at 6:00 PM and a Raffle Drawdown begins at 7:00 PM. During the Drawdown over \$5,000 in prizes will be awarded. The grand prize ticket holder will receive \$2,500, and runner up ticket prizes of \$500, \$250, \$100, \$75, plus every 25th ticket drawn wins a prize. The ticket price is \$75 and includes both dinner and raffle entry. Tickets are available for purchase at the Print Shop. The raffle price less dinner value is a tax deduction!

BIHS early history was reported in Beaver Beacon editions 1955-1958. In September 1955, the BIHS was formed by Russell P. Hoffman & A. J. Roy when they purchased the Print Shop. A restoration campaign was started and a call for "relics" to create a collection was advertised. A discussion ensued about submitting nominations for Protar's Home, the Print Shop, and the Indian Chapel built by Bishop Baraga, to the Michigan Historical Commission.

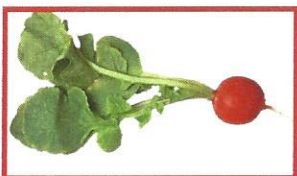
In May 1956, the Society reproduced the Northern Islander of Strang's last days and was sold for \$0.25 to raise money for repairs. In June the first sustaining membership was received from Mark A. Strang, grandson of James Jesse Strang. He offered an original copy of the Mormon Book of Law to the museum. In October 1956, the official membership count was twenty-seven regular members, eleven contributing members, and two life memberships. Today, we have almost 500 members. On June 16th, a bronze marker from the Michigan Historical Commission, along with an 1858 map and a letter of complaint written by Strang on August 12, 1851 was presented to the Society by the Michigan Historical Commission. On August 13, 1957, the first annual meeting was held at Holy Cross Hall where the constitution and bylaws were accepted. It is this day we mark as the Society's 60th anniversary.

Since then the Historical Society has had a dream to expand our museum space. The dream began with Bill Cashman, a beloved friend of the Island, and long term Society director for over eighteen years. Today, the dream lingers on. What started with the first inception in 1998, the Historical Society has raised over \$60,000 in capital campaign donations. We are extremely grateful for your shared belief in the need to create a new space dedicated to *Keeping Island History Alive*.

Some years ago a society committee was formed to create a concept plan showing what a new museum addition could look like. A professional museum planner was retained to help formulate what the major exhibits should be; cost and conceptual design. A planning grant was received from CCCF to create a pamphlet which is available for community review at either museum. This remains the basis for our Capital Campaign.

You can help us two ways:

1. The Society will be working on a strategic plan over the coming summer months. On August 22, we will be conducting a series of small focus groups with community members at the Peaine Township Hall. The times will be announced as we move closer to August. Please consider participating and helping define a plan that reflects the needs of our community and aligns with the BIHS mission.
2. Now more than ever your capital campaign donations are needed to help us complete the vision born so many years ago. Please consider donating to the capital campaign. Perhaps \$60 to commemorate the 60th anniversary? And finally, The Historical Society will hold its annual meeting on August 17, 2017 at the Peaine Township Hall at 7:00 PM. All members are encouraged to attend.



Historic Gardening! The radish race is on. Can you beat this record? The November 1957 issue of the Beaver Beacon ran a story called: Run-away-Radish. The veggie weighed close to 7 lbs with a length of 23 inches and a 15 inch circumference. The prize radish was grown by Sister Cletus in her garden behind the convent.

BEAVER ISLAND POTTERY by Danielle Spiessl



Would you travel nine hours in a birch bark canoe across Lake Michigan to get to Beaver Island? Students from Northern Michigan University's archaeology field school wondered if anyone had ever attempted such a feat. What they found may surprise you.

Behind the Mormon Print Shop on the island, students unearthed pottery sherds from the Late Woodland Period. This answered their question, and they knew they were on the right track.

The pottery they uncovered was broken, yet they contained valuable information. The most common pieces found were rim and body sherds. The rim is one of the most important diagnostic parts of a vessel because it can be used to identify the type, thereby indicating which group may

have come to the island. Some of the rim designs were scalloped while other were flat. One particular scalloped rim contained a partial thumb print. Some of the pottery sherds had round punctation marks, which are round decorative marks on the body. Most of the body sherds were cord marked (surface design made with a paddle wrapped in cordage). The color of the pottery ranged from almost black to sand colored, and all the pottery contained granitic temper.

Back at the lab, the artifacts were carefully cataloged, and students have begun to research the artifacts they found. One piece of charcoal was sent out to an independent lab for radiocarbon dating. The results from the lab indicated that the pottery was from the Late Woodland Period (1025 AD and 1110 AD), and probably associated with the Bois Blanc phase. Today, researchers continue to identify the pottery and other artifacts left on the island. This is part of reconstructing the ancient past and reanimating the lives of others.

Beaver Island Tourism and Fun!

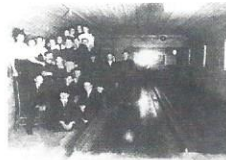
As the seasons turn and the landscape evolves, we thought it would be fun to feature images of iconic places and activities that have entertained both Islanders and Visitors in the past.

Quoted from the Beaver Beacon: Beaver Tales, March 1963. "Very few people have visited the Island without ever entering the Shamrock Tavern, for the Shamrock isn't just a tavern in the usual sense. For its entire history, it has been a public meeting place for young and old."

Photo Credits: Beaver Island Historical Society



Shamrock Bar, May 14, 1938



Beaver Island Lanes Circa 1895
Located across the street
from present yacht club.

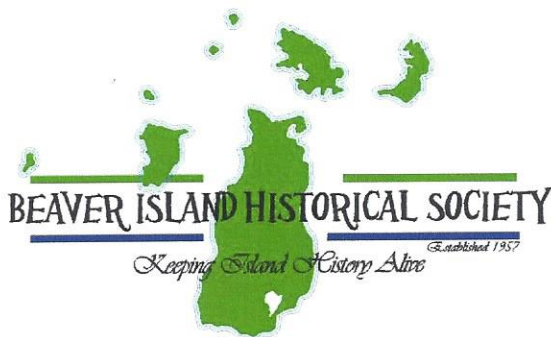


Postcard donated by
Jerry LaFreniere
McDonough Cabins Circa 1950s



Picture donated by Nels LaFreniere,
Date unknown
Sinclair Gas Station,
owned by Dick LaFreniere and
located where the Erin Motel is.

P.O. Box 263 Beaver Island MI 49782
www.beaverislandhistory.org
bihistory@tds.net



P.O. Box 263
Beaver Island, MI 49782
bihistory@tds.net
231-448-2254
www.beaverislandhistory.org

We would like to help the Beaver Island Historical Society in its mission of
Keeping Island History Alive by becoming members at the indicated level:

- Student/Senior \$25.00 Individual \$35.00 Couple \$50.00
Family \$100.00 Sustaining \$250.00 Corporate \$750.00

Name: _____

Street Address: _____

City, State, Zip: _____

Email Address: _____

**PLEASE INCLUDE YOUR EMAIL ADDRESS IF YOU WOULD LIKE TO RECEIVE
YOUR NEWSLETTER ELECTRONICALLY.**