



NEWSLETTER SPRING 2018

Membership Drive Update

The Beaver Island Historical Society Board of Directors offers it's thanks and gratitude to all of those who joined the Society as members this year. Our membership years runs from January 1 to December 31, so it is not too late to join us in "Keeping Island History Alive!"

Our membership drive progress over the winter has done very well and overall the following statistics are offered. The memberships noted are at various categories.

- 20 memberships renewed from 2015
- 22 memberships renewed from 2016
- 133 renewed membership from last year;
- And 36 NEW memberships
- Overall membership goal was achieved, currently we are 170% with continued growth expected over the summer.

A sincere thank you to our returning members and WELCOME aboard to our new members.

Memberships are vital to the Beaver Island Historical Society for two reasons: (1) Money is used to provide annual operating support including programming such as special events, museum week and music on the porch, as well as the Directors salary, utilities, new exhibits, newsletters, and property maintenance. (2) Beaver Island Historical Society members and volunteers are vital components in helping us achieve our mission and vision . **A Membership form is found on the back page of this newsletter and on our website www.beaverislandhistory.org/**

Mission Statement:

The purpose of the Society is to preserve and share the unique history of Beaver Island and the Archipelago.

Vision Statement:

The Society will share the unique historical stories of the Archipelago through the renovated and expanded museums.

Inside this issue

Directors Corner..... 2
Meet our Board Members..... 3
Water|Ways.....3
Our Visitors.....3-5
Schedule of Events..... 6-7
Membership Form 8

MEMBERS OF THE BOARD

- MARK ENGELSMAN - PRESIDENT
MIKE WEEDE - VICE PRESIDENT
ROBERTA WELKE-TREASURER
MAEVE GREENE- SECRETARY
LYNNE FLANAGAN—TRUSTEE
JOHN FIEGEN –TRUSTEE
SHERI TIMSAK- TRUSTEE
PATRICK CULL- TRUSTEE
DICK McEVOY- TRUSTEE
VINCE EBERSOLDT –TRUSTEE
ANGEL WELKE - TRUSTEE
ALVIN LaFRENIERE—TRUSTEE
JOHN RUNBERG- TRUSTEE

DIRECTORS CORNER by Lori Taylor-Blitz

Greetings. I would like to thank each one of you for the support you have given the society through the outpouring of renewed and new memberships. As your Director, I am very encouraged and energized to set an exciting summer line-up into motion. In the following pages a schedule event is given. I hope to see many of you attend, and if you have a moment, please stop by and offer us feedback.

The museums were cleaned and organized over the winter. In the Print Shop, the Native American Room and Gift Shop were flipped. In the Marine Museum, the stories were organized and restaged. A Wooden Boat traveling banner exhibit is on display, and other banners from the exhibit are on display at the Community Center, Boat Dock ,and Print Shop. Other new exhibits at the Marine Museum include an exhibit about the Vernon Shipwreck. Several pieces are on loan from the Wisconsin Maritime Museum, and the Beaver Island Boat Company donated a display case of St. James Harbor. The exhibit was created by William F. Hemholdt and the background was painted by former student of the Kendall School of Design. If you have not visited the museums in a while, stop in and check us out! As always admission is FREE and donations are accepted.

This summer I will have Director Meet and Greet after-hours from 4-9 p.m. on the dates listed below rotating between the sites . I hope this will lend an opportunity for broader access to the museums in the evenings and create opportunities for chatting with our members.

- * **June 27, 2018 – Water | Ways**
- * **July 25, 2018 – Print Shop**
- * **August 15, 2018 – Print Shop**
- * **August 29, 2018 – Print Shop**
- * **July 11, 2018 – Marine Museum**
- * **August 1, 2018 – Marine Museum**
- * **August 22, 2018 – Marine Museum**



Top Left: The Vernon Shipwreck Display.

Top Right: Delivery Day from the Beaver Island Boat Company with Display case of St. James Harbor.

Bottom Left: The Native American room.

OUR WEBSITE HAS A NEW LOOK! CHECK US OUT:
<https://www.beaverislandhistory.org/>

MEET THE BIHS OFFICERS OF THE BOARD

MARK ENGELSMAN
PRESIDENT

My family and I moved to the Island over six years ago. We chose Beaver Island because of the community and people who live here. I am a small business owner and have prior work experiences in museums such as the Henry Ford Museum, Kalamazoo Valley Museum and Grand Rapids Public Museum. Museum work ignited a passion within me for local history. I serve on other Island boards as well: Beaver Island Community Schools, Transportation Authority and the Chamber of Commerce.

MIKE WEEDE
VICE-PRESIDENT

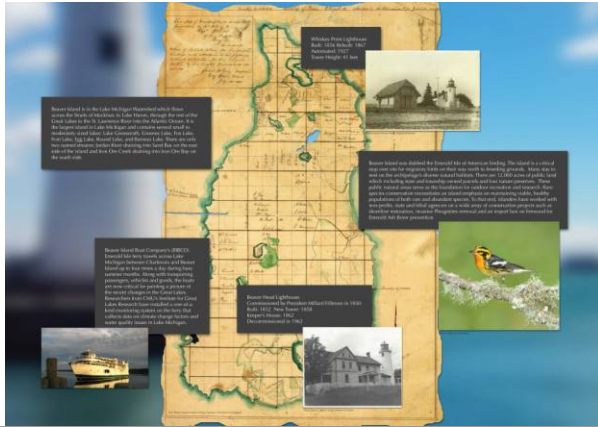
I have lived on the island for 16, years and been coming here for almost 30 years. I have had my own small business on the island for 16 years. I am a retired school teacher, with 30 years in the classroom. Which fits well with life of teaching scuba diving. I enjoy history and traveling, I have 2 children and they live out west with their families. I have a BS and A Masters degree, and a captains license, With a 200 ton rating, and a tugboat license. I am also a master scuba instructor.

ROBERTA WELKE
TREASURER

Roberta (Bobbi) Welke has been a lifelong visitor to Beaver Island during holidays and summer, after the Island was discovered by her grandfather and infant father in the 1930s. She has been a seven-month seasonal resident since 2015 after retiring from the Michigan Department of Transportation after a 31-year career as a licensed professional civil engineer. She has engineering degrees from MSU and UM. She spent the last 18 years of her career as the Southwest Region Engineer in Kalamazoo, responsible for all MDOT activities in the nine southwest Michigan counties. Between 1993 and 1997 Bobbi was the design and construction project manager for the second Blue Water Bridge located between Port Huron, MI and Point Edward, Ontario. Bobbi built her island home in the mid-1990s. She volunteers her time as the Treasurer with the Beaver Island Historical Society and the Comptroller with the Beaver Island Cultural Arts Association.

MAEVE GREEN
SECRETARY

My name is Maeve Green. I grew up on Beaver Island, and graduated for Beaver Island Community School in 2009. Currently, I am the preschool, kindergarten, and first grade teacher at BICS. I also coach volleyball. I have been fascinated with Beaver Island's unique past since I was kid, listening to my Grandpa Russell tell stories of his childhood on Beaver Island and the people he grew up with.



LEFT: Beaver Island Panel for the Water|Ways exhibit
RIGHT: Smithsonian Panel for the Water|Ways exhibit

Exhibit Hours Same As Museums

"This Water|Ways project was funded in part by Michigan Humanities Council, an affiliate of the National Endowment for the Humanities."



The Water|Ways exhibit is on display at the St. James Township Hall. June 23– August 5, 2018
Water/Ways is part of Museum on Main Street, a collaboration between the Smithsonian Institution and State Humanities Councils nationwide. Support for Museum on Main Street has been provided by the United States Congress.

Our Visitors: North Central Michigan College

May 15–18, 2018 NCMC visited Tara's Meadow and completed a study about sustainability on Beaver Island. Below is an article written by a student.

This Place Matters
By: Garrett Greer

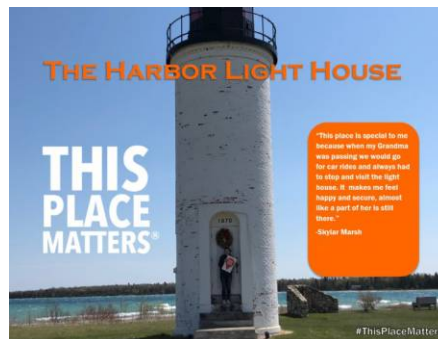


VOLUNTEER CORNER—YOUR HELP IS NEEDED
By Sue Oole, Docent Coordinator

A big thank you to all who are volunteering their time this summer. Our volunteers are crucial to our success in fulfilling the BIHS motto of "Keeping Island History Alive". Currently we are looking for additional docents to staff our museums. We also need volunteers for the Smithsonian exhibit, the Protar House, and many other jobs that help keep our facilities in good working order. If you are interested in being a part of our volunteer crew, or would like to volunteer with a friend, please call me at (269) 377-9201 or (231) 448-2628 the Printshop @ 4482254 and let us know what skills you are willing to share and we will find a way to use those skills to strengthen our mission. We look forward to another great summer of historical adventures in 2018.

Many places you'll travel to will have a history that survives in a dormant space in the past- not here. Beaver Island is a mystical destination where the history seems to be still as visible as the day it happened. Whether it is the people, the places, or the wildlife on the island, the stories are written for all to read. Everywhere you look, whether it is the road signs, the historical museums, McDonough's Market, or the countless other shops and buildings on the island, there is a story to be told.

None more evident than the Beaver Island Historical Society itself. At one point in time the building on the corner of Main St. and Forrest Avenue was designated as the Mormon Print Shop. It was erected in 1850 and in operation until 1856 where the Northern Islander was printed weekly. Now, when you walk in there is still that earthy odor than can be traced back to the original hand-hewn logs that gave the building structure so many years ago and that are still visible today. Once inside you will be greeted with a warm smile from one of the most delightful and knowledgeable woman I have ever had the pleasure of meeting, Lori Taylor-Blitz. Ask her anything about the rich history of the island, and she is sure to give you the story. From the Native Americans



to the Mormons and then the Irish immigrants, there is no shortage of tales to be told in this phenomenal little museum. It offers a thorough display of the island in its entirety by displaying stories from the Strang time and all his Mormon followers, to musical instruments that were used by locals here, drawings of and stories about the original Irish men and women who arrived from Arranmore, Ireland in the mid to late 1800's. Also, artifacts found right here on the island that were used by the Native Americans. I was in "awe" of all the amazing artifacts that were inside the four rooms. My eye's and mind didn't know where to start first.

Little places like this really give you a true feel for all that this island has to offer. Whether it is the warm and gentle smile inside, the history outside, or the artifacts tucked safely away behind the glass surrounded by the old timber frame, you get a true sense of what to expect as you go through and adventure the rest of the island. Little places like the Beaver Island History Society truly exemplify why this place truly does matter!

OUR VISITORS: Northern Michigan University

This spring the Print Shop welcomed the Northern Michigan Archaeological Field School, May 20th through June 16th. The students completed a shovel survey at the Protar House and continued a grid dig behind the Print Shop. Two articles were submitted written by NMU field school students.

What is a Flot? (Flotation Processing)

By: Malachi Tripaldi

Archeologists spend most of their time in the dirt looking for artifacts, or in the lab examining artifacts. Sometimes the most crucial artifacts, like seeds, fish scales, and charcoal, are hard to find. To find these artifacts, we look to flotation processing.

Recently, I ran my first flot on an ash pit I found behind Protar's home on Beaver Island while at the NMU Archeology Field School. At NMU our flots are done in two modified five gallon buckets. One is cut in half and put over the other with a fine mesh (similar to wedding veil) in the middle to catch the medium fraction. On top of the device, we put a larger, stronger 1/4" mesh that will capture the heavy fraction. All the light fraction will float to the top and exit through a pvc pipe just below the top of the flot device. This organic material is caught in a very fine mesh screen.

To run a flot, you first put the sample on top of the wire mesh and spray water over it. The large pieces of dirt and rock that do not go through are the heavy fraction. Water is added to the soil then washed out until the bucket water turns clear. The medium fraction will all be stuck in the wedding veil, while the light fraction will all be caught in the light mesh screen as it exits through the pvc pipe.

Once the flot is dried, the processing of sorting begins. I sorted a bag of processed soil from a Late Woodland feature at the Mormon Print Shop on Beaver Island that was dated to ca. 900 - 1000 AD. The sample was taken from the top layer of an anthrosol left from human activity. It took me about 12 hours to look through all levels of fraction. In the medium and heavy fraction I found pieces of pottery, broken glass, and lots of charcoal. In the light fraction I found seeds and bug pieces, which give me clues as to what the environment was like at the time. After collecting my data, I believe that the feature was a hearth and that this specific sample came from inside the structure. This is nothing more than a hypothesis and takes more testing to prove. The charred seeds and other floral remains will be sent to a paleoethnobotanist for identification. Similar flots suggest a late summer to fall occupation of the site.



Photo credit: Malachi Tripaldi



Left: NMU Archaeology Field School dig behind the Print Shop.

Right: NMU Students at the Protar House.

Photo Credits:
Lori Taylor-Blitz



OUR VISITORS: NORTHERN MICHIGAN UNIVERSITY (Continued)

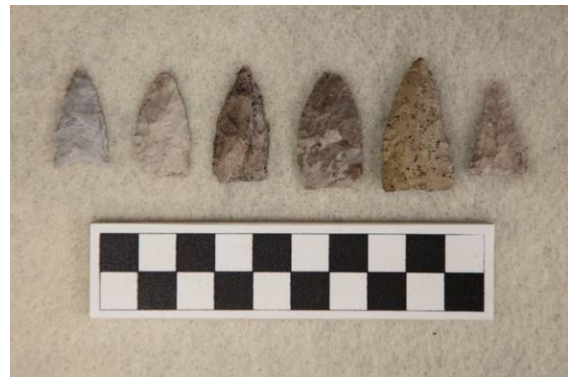
Pointing To The Past

By: Kaelyn Wright and Ryan Peterson

Projectile points are one of the common artifact finds of any Woodland period (ca. 1000 B.C. to A.D. 1600) archaeological dig site, bringing with them not only the thrill of discovery, but also a strong sense of use and survival. Almost all of the projectile points found by NMU students are made from small glacial cobbles found along the limestone beaches, although Norwood chert from western Michigan is also used. Because of the lack of chert resources, cobbles were reduced further using a hammer and anvil method. This involved using a piece of chert as an anvil and striking it with a hammerstone, chipping usable flakes off of a bifacial core. A majority of the projectile points found on the site are small and triangular in shape. These points have straight sides and many contain slightly concave bases. Triangular points such as the ones shown here, belong to a type of projectile point style known as a Madison point. These points are commonly found on archaeological sites dating to the Late Woodland or Mississippian time periods (c.a. A.D. 800 into the early historic period) (See Figure 2). One side-notched projectile point appears to be made from a French made gunflint (See Figure 1). The small size and expedient manufacturing of these points made them ideal for use as arrowheads.



Projectile Points found behind the Print Shop.
Photo Credit: Kaelyn Wright and Ryan Peterson.



OUR VISITORS: FREEMONT MIDDLE SCHOOL

Hi, I'm Emily Rowe and I am part of the 2018 Beaver Island Group. I am from the first session out of two that travels to Beaver Island. My Science teacher Terry Grabill and his wife Andrea Grabill run this program for students from Fremont Middle School. We come to come about Beaver Island's history and environment. Our school is located in the Southwest corner of the Mitten not far from the lakeshore. This is the 20th year that Fremont Middle School has studied on the Island. Each group that visits consists of ten, 8th grade students, comprising of five girls, five boys and two chaperones.

While our group is on the Island we do various things including visiting some of the oldest places on Beaver Island and completing community service projects that count towards our high school graduation. While we are here we stay at the CMU Biological Station. Some of the places we visit are Miller's Marsh and Little Sand Bay to catch the various types of snakes that the island inhabits. Our time here also includes bird watching, swimming, and spending some time in one of CMU's research labs. Our community service projects vary from year-to-year. Our session has completed two community service projects, one was cleaning the trash that washed up on Little Sand Bay, the other consisted of painting the benches and cleaning the gardens at the old Mormon Print Shop. I can definitely say that our group has enjoyed their trip to Beaver Island and I'm very sure that the second group will enjoy it just as much as we did.

~Emily Rowe 6/12/18



DID YOU KNOW ADMISSION TO THE MUSEUMS AND MOST EVENTS ARE FREE? WE ACCEPT FREWILL DONATIONS. THIS ALLOWS UNCONDITIONAL ACCESSIBILTY TO ALL VISITORS.



JUNE 22- AUGUST 5, 2018

Beaver Island Historical

Society is pleased

To Present **4** Water Exhibits

Where: WHISKEY POINT: St. James Township Hall & CMU Boathouse

Mon. – Sat. 11 A.M. – 5 P.M.

Sunday 1-4 P.M.

Exhibit 1: Water/Ways – Offered by the Smithsonian Institution: Museum On Main Street

Exhibit 2: Michigan Water Heritage Project
Offered by: Michigan Humanities, Office of the Great Lakes, Cranbrook Institute, Kalamazoo Nature Center, and Michigan State University

Exhibit 3: Changing Waters: Environmental Research in the Great Lakes- Offered by Central Michigan University Institute for Great Lakes Research and the CMU Biological Station. Tour the Boathouse, research facility and the MV Chippewa. Hours: Thursday – Saturday 11 a.m. – 5 p.m.

Exhibit 4: Visit the Madeline

Where: Beaver Island Municipal Marina June 22 & 23, 2018

Hours: 1-4 p.m.

Water|Ways is part of Museum on Main Street, a collaboration between the Smithsonian Institution and Humanities Councils nationwide. Support for Museum on Main Street has been provided by the United States Congress.

WATER|WAYS PROGRAMMING

June 22, 2018

Premiere Water/Ways Opening

Community Center: Keynote Address by Dave Dempsey 7-8:30 P.M.

June 23 Museum Open Houses

Pirate Party at the Point

July 6 Marine Museum—Chris Lechner *Paddle Boarding the Archipelago and Beyond* 7-8 P.M.

July 14 Scientific Cruise on the M.V. Chippewa

July 19 Children's Field Trip to Miller's Marsh 9 A.M. - 12 P.M.

July 21 CMU Inland Lakes Field Trip 9 - Noon

July 25 Big Mac Party: Municipal Marina Starts at 4 P.M.

July 26 Water/Ways Symposium @CMU Biological Station 10:30-3 P.M.

July 28 CMU Scientific Cruise on the M.V. Chippewa

PICNIC AT THE POINT A six week

series on the following Wednesdays and Monday with speakers about various Water/Ways topics. Bring a lunch and enjoy. Noon-1 P.M.

June 27 *CMU Ferry Study: Using the BIBCO Ferry to Monitor Water Quality in Northern Lake Michigan*

July 2 *Chris Lechner: Paddle Boarding the Great Lakes* (Monday)

July 11 *Dan O'Keefe: Sea Grant*

July 18 Frank Hacket, *B. I. Coast Guard History*

July 25 Lori Taylor-Blitz: *Third Coast Conversations*.

August 1 Eli Baker, Tip of the Mitt Water Council, *Protecting Your Watershed: Beaver Island Watershed Academy and Beetle Mania*



BIHS MUSEUM WEEK #38

Sunday, July 15, 2018

“This Place Matters” A picnic at the Beaver Head Lighthouse.

Monday, July 16

Heritage Park: History Fun Days
Print Shop: *Music on the Porch*

Tuesday, July 17

CMU Open House: Inside of Great Lakes Research at CMU Boathouse
Heritage Park: History Fun Days
Holy Cross Church: Drumming Circle, Baraga History & Pilgrimage
BICC: A Tribute to Barry Pischner and Beaver Island's Balladeers

Wednesday, July 18

“Picnic at the Point” *USCG History with Frank Hackett*
Fellowship Center: Art Show
Protar’s: Living History & Tour
Community Center: Antiques Road Show

Thursday, July 19

Fellowship Center: Art Show
Protar’s: Living History & Tour
Marine Museum: Meet the Fishing Families, and Boat Captains
BICS: State of the School Address and Party for the Playground
In the evening check out the Beaver Island Music Festival!

Friday, July 20

Jewell Gillespie Beach: Water Carnival with children activities and *Clark the Juggler*.
Fellowship Center: Art Show
Protar’s Cabin: Living History
BICC: Frank Mays , The story of the Carl D. Bradley

Saturday, July 21

B.I. Library: A special story hour with Lori E. Taylor, author of *Bamboozled on Beaver Island*, a festive garden walk and puppet show.
Holy Cross Hall: Bingo returns!

1-5

1-4

7-9

10-4

1-4

2-4

7-9

12-1

12-4

12-4

7-9

12- 4

12- 4

12- 4

4-6

11- 2

12- 4

12- 4

7- 9

1-2:30

7 -9

IN THE GIFT SHOPS

Journal of Beaver Island History
Volume I. Are in stock!
\$13.00

The BIHS Historical Map, Third Edition are now available.

Custom Water|Ways mugs are available in the gift shop made by Local potter Larissa McGinnity.

For the kids:
We have plastic ferries, submarines, and tugboats

Three new coloring books about the Great Lakes, Michigan and Great Lakes Freighters

Many new children's books about bugs, birds, butterflies and Bamboozled on Beaver Island by Lori E. Taylor

CMU Museum Week Tickets

Buy your tickets at the Print Shop for the following events:

July 14, 2018 CMU Scientific Cruise on the M.V. Chippewa 1 or 3 p.m. \$25.00 (only 9 seats available)

July 19, 2018 Children's Field Trip to Miller's Marsh, 9am-12pm \$10.00 (Does not include lunch)

July 21, 2018 Inland Lakes field Trip to the , 9am-12pm \$25.00 (Includes Lunch)

July 28, 2018 Scientific Cruise on the M.V. Chippewa 1 or 3 p.m. \$25.00 (only 9 seats available)

Gift Shop Hours:
Monday—Saturday 11-5 p.m.
Sunday 1-4 p.m.



MEMBERSHIP YEAR: JANUARY 1 – DECEMBER 31

We would like to help the Beaver Island Historical Society in its mission of Keeping Island History alive by becoming members or renewing at the indicated level:

- Student/Senior \$25.00 _____
- Couple \$50.00 _____
- Sustaining \$250.00 _____
- Other Donation _____
- Individual \$35.00 _____
- Family \$100 _____
- Benefactor \$500 _____
- Corporate \$750.00 _____

P.O. BOX 263, BEAVER ISLAND, MI 49782
 bihistory@tds.net
 231.448.2254
 www.beaverislandhistory.org

Name: _____

Street Address: _____

City, State, Zip: _____

Email Address: _____

BEAVER ISLAND HISTORICAL SOCIETY

P.O. BOX 263
 BEAVER ISLAND, MI 49782

Phone: 231-448-2254
 E-mail: BIHISTORY@TDS.NET

